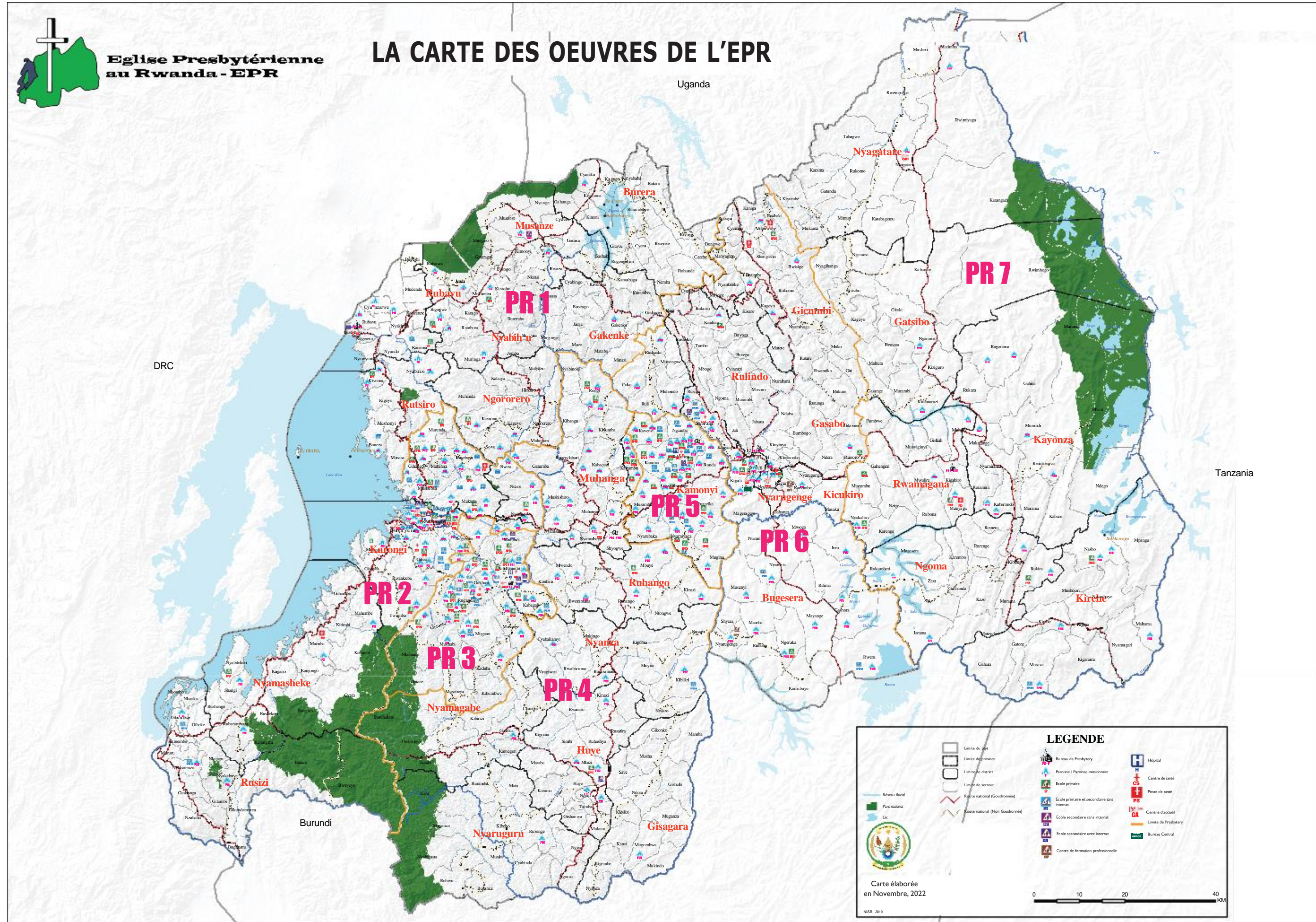




**Eglise Presbytérienne
au Rwanda - EPR**

LA CARTE DES OEUVRES DE L'EPR



LEGENDE

Limite du pays	Bureau de Presbytery	Hopital
Limite de province	Paroisse / Paroisse missionnaire	Centre de santé
Limite de district	Ecole primaire	Poste de santé
Limite de secteur	Ecole primaire et secondaire sans internat	Centre d'accueil
Route nationale (Goodroad)	Ecole secondaire sans internat	Limite de Presbytery
Route nationale (Non Goodroad)	Ecole secondaire avec internat	Bureau Central
Réseau Rural	Centre de formation professionnelle	
Participation		
Lac		

Carte élaborée en Novembre, 2022

NSR, 2019

Ecoles Primaires (EP)

- EP 1: CS Rukoma
- EP 2: EP Buganamana
- EP 3: EP Karunda
- EP 4: EP Kijote
- EP 5: CS Musabike
- EP 6: EP Byimana
- EP 7: EP Kibingo
- EP 8: EP Gaseke
- EP 9: EP Byeru
- EP 10: EP Kagabiro
- EP 11: EP Kanyamurinda
- EP 12: EP Kigoye
- EP 13: EP Kigwa
- EP 14: EP Mbogo
- EP 15: EP Rubengera I
- EP 16: EP Ruhingo
- EP 17: EP Rutobo
- EP 18: EP Nyamuhire
- EP 19: Indatwa Rubengera
- EP 20: Etolie School
- EP 21: EP Gafuba
- EP 22: EP Kazizi
- EP 23: EP Nyamugari
- EP 24: EP Kugutuntu
- EP 25: EP Kuruganda
- EP 26: EP Mugano
- EP 27: EP Murambi
- EP 28: EP Nyagisazi
- EP 29: EP Nyakabuye
- EP 30: EP Nyamabuye
- EP 31: EP Ruganda
- EP 32: EP Rugobagoba
- EP 33: EP Rwamuramira
- EP 34: EP Nyawosore
- EP 35: EP Wagishimbiri
- EP 36: EP Dusasa
- EP 37: EP Kabirizi
- EP 38: EP Giko
- EP 39: EP Rutobwe
- EP 40: EP Musenyi
- EP 41: EP Karama-Mtazi
- EP 42: EP Gitega
- EP 43: EP Nyabugombe
- EP 44: EP Ntonde
- EP 45: EP Mugu
- EP 46: EP Ingenzi Mbatzi
- EP 47: EP Rubona
- EP 48: EP Kayonza
- EP 49: EP Bugarama
- EP 50: EP Gacurabwenge
- EP 51: EP Shaka
- EP 52: EP Gisenyi
- EP 53: EP Gishwira
- EP 54: EP Taba Indatwa
- EP 55: EP Rugarika II
- EP 56: EP Gihanga
- EP 57: EP Nyabutare
- EP 58: EP Kamuzi
- EP 59: EP Rwiswima
- EP 60: EP Cyamuganga
- EP 61: EP Kamuhiza
- EP 62: EP Karama-EPR
- EP 63: EP Karugira
- EP 64: EP Rebero
- EP 65: Kabuga Presbyterian School
- EP 66: EP Muryumu
- EP 67: EP Ngeruka
- EP 68: EP Zinga
- EP 69: EP Mukoma
- EP 70: EP Mubumbwe
- EP 71: EP Rugaragara

Ecoles Secondaires (ES)

- ES 1: GS Gatizo
- ES 2: GS Remera Indangamirwa
- ES 3: GS Buye
- ES 4: GS Runda-Isonga
- ES 5: GS Mburatururo
- ES 6: GS Muvumu
- ES 7: GS Rwabi
- ES 8: GS Nyamate EPR
- ES 9: GS Ruzo
- ES 10: GS Rugango

Centre de formation professionnelle

- CFP1: EPR Nyamirama TVET School
- CFP2: CPAJ - TVET

Hopitaux

- H 1: Hopital Kirinda
- H 2: Hopital Remera Rukoma

Centre de santé (CS)

- CS 1: Centre de santé Rubengera
- CS 2: Centre de santé Kirambo
- CS 3: Centre de santé Kirinda
- CS 4: Centre de santé Biguhu
- CS 5: Centre de santé Rukoma
- CS 6: Centre de santé Rwabi

Poste de santé (PS)

- PS 1: Poste de santé Mukoro
- PS 2: Poste de santé Vugangoma
- PS 3: Poste de santé Kiruhura
- PS 4: Poste de santé Cyamuganga
- PS 5: Poste de santé Zinga

Centres d'accueil (CA)

- CA 1: CA Gisenyi
- CA 2: Hotel Bethany
- CA 3: Centre Ubuculi
- CA 4: Centre Bethel
- CA 5: Guest House Kirinda
- CA 6: Guest House Gitarama
- CA 7: Guest House Remera
- CA 8: Auberge d'accueil Kiyovu
- CA 9: Centre d'accueil Isano
- CA 10: Amahoro Apartment
- CA 11: Centre d'accueil Amizero

Paroisse / Paroisse missionnaire

- P 1: Buganamana
- P 2: Bushaka
- P 3: Gacuba
- P 4: Gicye
- P 5: Kalembe
- P 6: Karambo
- P 7: Kayove
- P 8: Kigarama
- P 9: Kirarira
- P 10: Mukingo
- P 11: Mutaka
- P 12: Ramba
- P 13: Ruhengeri
- P 14: Bigogwe
- P 15: Gakondogo
- P 16: Kibaho
- P 17: Nganzo
- P 18: Nkuri
- P 19: Nyabirasi
- P 20: Nyarutovu
- P 21: Rubavu
- P 22: Rugarama

Presbytery Gisenyi

- P 23: Bucyeye
- P 24: Bukiro
- P 25: Bwira
- P 26: Bwiza
- P 27: Byeru
- P 28: Gafunzo
- P 29: Gakuta
- P 30: Gasaka
- P 31: Gatara
- P 32: Gisenzu
- P 33: Gitega
- P 34: Kamembe
- P 35: Kibingo
- P 36: Kibuye
- P 37: Kigoye

Presbytery Kigali

- P 38: Kigwa
- P 39: Kirambo
- P 40: Mukore
- P 41: Musango
- P 42: Ngugu
- P 43: Nyagatovu
- P 44: Rubengera
- P 45: Rubona
- P 46: Rugarambo
- P 47: Rukoko
- P 48: Rwamatamu
- P 49: Rwamiko
- P 50: Rwimari
- P 51: Sure
- P 52: Bizu
- P 53: Cyimbogo
- P 54: Gatanga
- P 55: Gihara
- P 56: Gishabe
- P 57: Gitesi
- P 58: Kabona
- P 59: Kabuga
- P 60: Kamabuye
- P 61: Karera
- P 62: Kazibaziba
- P 63: Kigezi
- P 64: Kiraro
- P 65: Mataba
- P 66: Mugo
- P 67: Mukura
- P 68: Ndenzezi
- P 69: Nyakabuye
- P 70: Nyamareba
- P 71: Nyamirama
- P 72: Nyarubye

Presbytery Kirinda

- P 73: Biguhu
- P 74: Burango
- P 75: Gihwa
- P 76: Kabirizi
- P 77: Kabuyenzi
- P 78: Kirinda
- P 79: Kugutuntu
- P 80: Kuruganda
- P 81: Mubuga
- P 82: Mugano
- P 83: Munirira
- P 84: Mutuntu
- P 85: Ngyange
- P 86: Nyagisozi
- P 87: Rugabano
- P 88: Rusengezi
- P 89: Sou
- P 90: Wagishimbiri
- P 91: Jimbu
- P 92: Musasa
- P 93: Musibeya
- P 94: Nyabikeri
- P 95: Rugobagoba
- P 96: Ruhare

Presbytery Gitarama

- P 97: Giko
- P 98: Butare
- P 99: Gasagara
- P 100: Gitarama
- P 101: Kabadaha
- P 102: Kiriza
- P 103: Muzi
- P 104: Mushi
- P 105: Mukingira
- P 106: Musenyi
- P 107: Mututu
- P 108: Nyamagabe
- P 109: Nyanza
- P 110: Ruhango
- P 111: Rukamiro
- P 112: Rutobwe
- P 113: Rutongo
- P 114: Buba
- P 115: Bweramvura
- P 116: Cyegera
- P 117: Gaseke
- P 118: Gihindamuyaga
- P 119: Gisiza
- P 120: Gihwa
- P 121: Kabaza
- P 122: Kibaya
- P 123: Kiganda
- P 124: Kinsanga
- P 125: Kiwa
- P 126: Matyazo
- P 127: Mucubira
- P 128: Mugombwa
- P 129: Murambi
- P 130: Musange
- P 131: Ndiza
- P 132: Ntonde
- P 133: Nyakizu
- P 134: Nyarusange
- P 135: Rwamakara
- P 136: Nyarubuye

Presbytery Remera

- P 137: Bibungo
- P 138: Bubazi
- P 139: Bugoba
- P 140: Buguri
- P 141: Gacurabwenge
- P 142: Gatizo
- P 143: Gihara
- P 144: Gihinga
- P 145: Gisenyi
- P 146: Gishubi
- P 147: Kagina
- P 148: Kamuzi
- P 149: Karama
- P 150: Karangara
- P 151: Kayonza
- P 152: Mbatzi
- P 153: Mukinga
- P 154: Murehe

Presbytery Kigali

- P 155: Musambira
- P 156: Mwinde
- P 157: Ngoma
- P 158: Nyakabuye
- P 159: Nyarubuye
- P 160: Remera
- P 161: Rubona
- P 162: Rugarika
- P 163: Runda
- P 164: Ruyumba
- P 165: Janga
- P 166: Karabyeyi
- P 167: Mugu